

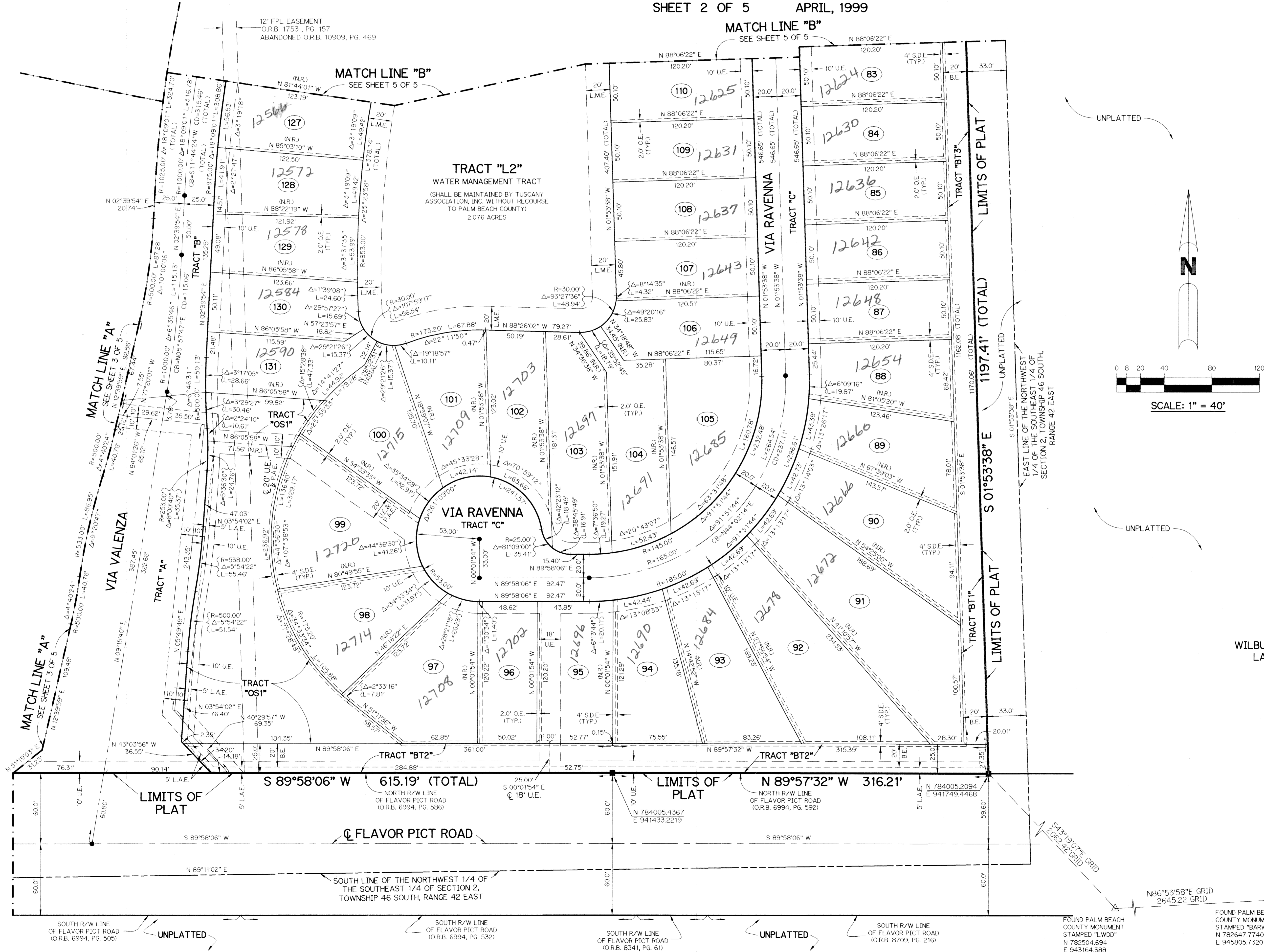
# CORAL LAKES XII

CORAL LAKES PLANNED UNIT DEVELOPMENT

A PARCEL OF LAND LYING IN SECTION 2,  
TOWNSHIP 46 SOUTH, RANGE 42 EAST,  
PALM BEACH COUNTY, FLORIDA.

SHEET 2 OF 5 APRIL, 1999

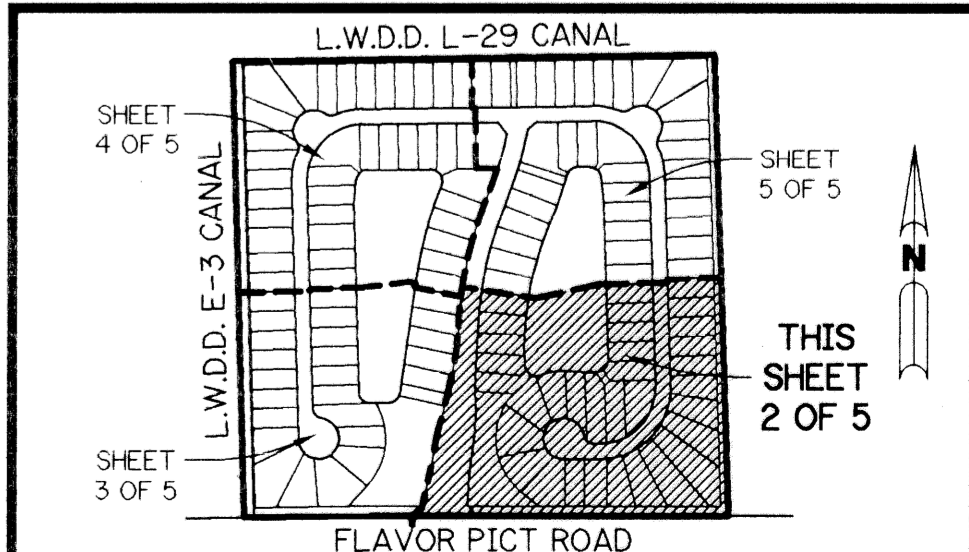
**NOTE:**  
 COORDINATES SHOWN ARE GRID COORDINATES  
 DATUM = NAD 83 (1990 ADJUSTMENT)  
 ZONE = FLORIDA EAST ZONE  
 LINEAR UNIT = U.S. SURVEY FEET  
 COORDINATE SYSTEM 1983 STATE PLANE  
 TRANSVERSE MERCATOR PROJECTION  
 ALL DISTANCES ARE GROUND  
 SCALE FACTOR = 1.000034748...  
 NO ROTATION: PLAT BEARING = GRID BEARING



- LEGEND:**
- - SET PERMANENT REFERENCE MONUMENT, LB-6674
  - - PERMANENT CONTROL POINT, PSM #4190
  - △ - DELTA ANGLE
  - B.E. - BUFFER EASEMENT
  - C.L. - CENTERLINE
  - D.B. - DEED BOOK
  - D.E. - DRAINAGE EASEMENT
  - L. - ARC LENGTH
  - L.A.E. - LIMITED ACCESS EASEMENT
  - L.M.A.E. - LAKE MAINTENANCE ACCESS EASEMENT
  - L.M.E. - LAKE MAINTENANCE EASEMENT
  - L.W.D.D. - LAKE WORTH DRAINAGE DISTRICT
  - NR. - NOT RADIAL
  - N.T.S. - NOT TO SCALE
  - O.E. - OVERHANG EASEMENT
  - O.R.B. - OFFICIAL RECORD BOOK
  - P.B. - PLAT BOOK
  - P.S. - PAGES
  - P.S.M. - PROFESSIONAL SURVEYOR AND MAPPER
  - R. - RADIUS
  - R/W. - RIGHT-OF-WAY
  - S.D.E. - SWALE DRAINAGE EASEMENT
  - S.T. - SURVEY TIE
  - U.E. - UTILITY EASEMENT
  - C.B. - CHORD BEARING
  - P.A.E. - PEDESTRIAN ACCESS EASEMENT
  - N 737648.0171  
E 905258.2326 - DENOTES STATE PLANE COORDINATES

THIS INSTRUMENT PREPARED BY  
 WILBUR F. DIVINE, P.S.M. 4190, STATE OF FLORIDA  
 LAWSON, NOBLE AND WEBB, INC., LB-6674  
 ENGINEERS PLANNERS SURVEYORS  
 420 COLUMBIA DRIVE, SUITE 110  
 WEST PALM BEACH, FLORIDA

**KEY MAP**  
N.T.S.



SUBDIVISION Coral Lakes XII  
 BOOK 88  
 FLOOD MAP # 2-58  
 ZONING PD USE  
 QUAD # 36  
 SE 18-1303  
 TAZ 960  
 FUD NAME Ivy Bay